

# Industry Response to Avian Influenza Outbreaks



Michelle Kromm, *DVM, MPH, MAM, DACPV*  
Food Forward, LLC

# Agenda

Production supply chain overview

Collaboration during HPAI event in 2015

Other avian influenza outbreaks

# Poultry supply chain

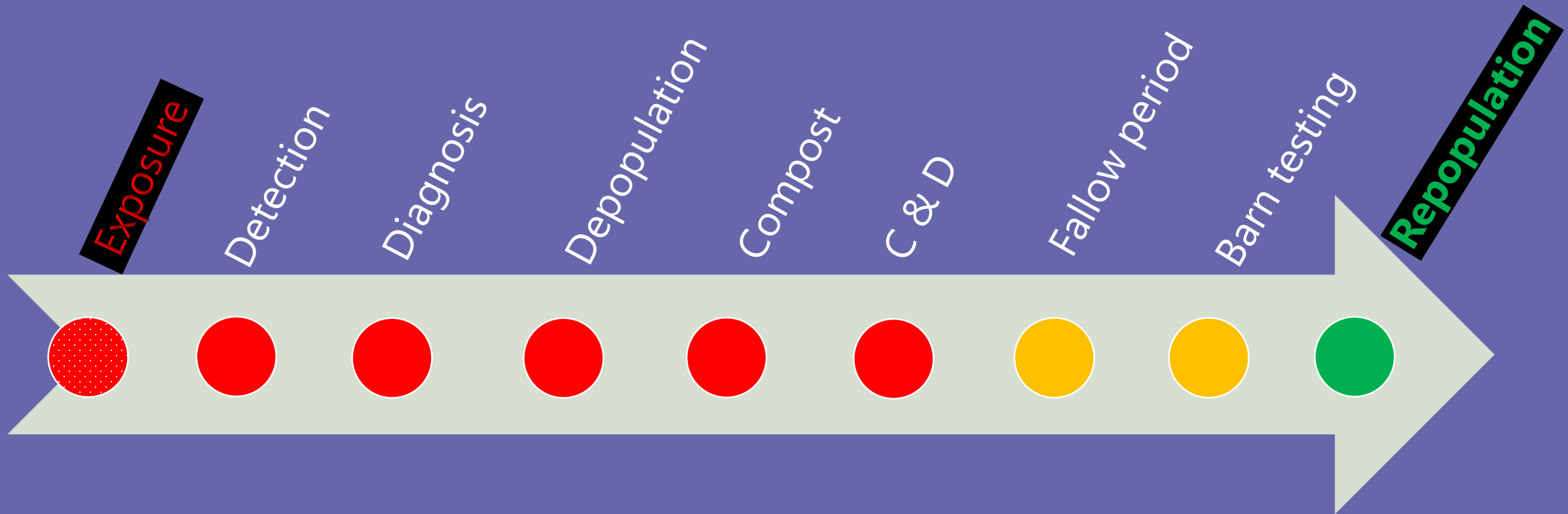
- Schedules are set weeks to years in advance
- Facilities are designed for a just-in-time delivery
- Delays in movements could create welfare challenges



# Response collaboration



- Regulatory agencies drive the car
  - They control the disease response
- Industry knows how the car works
  - They understand the supply chain
- Collaboration results in reaching the destination more efficiently
  - Reduces the impact on industry
  - Leads to quicker containment



# Positive premise activities timeline

# Key policy adjustments



Lab capacity management



Coordinated schedules



Multistep indemnity process



Streamlined electronic process



Depopulation capacity



Joint expectation set



Repopulation policy



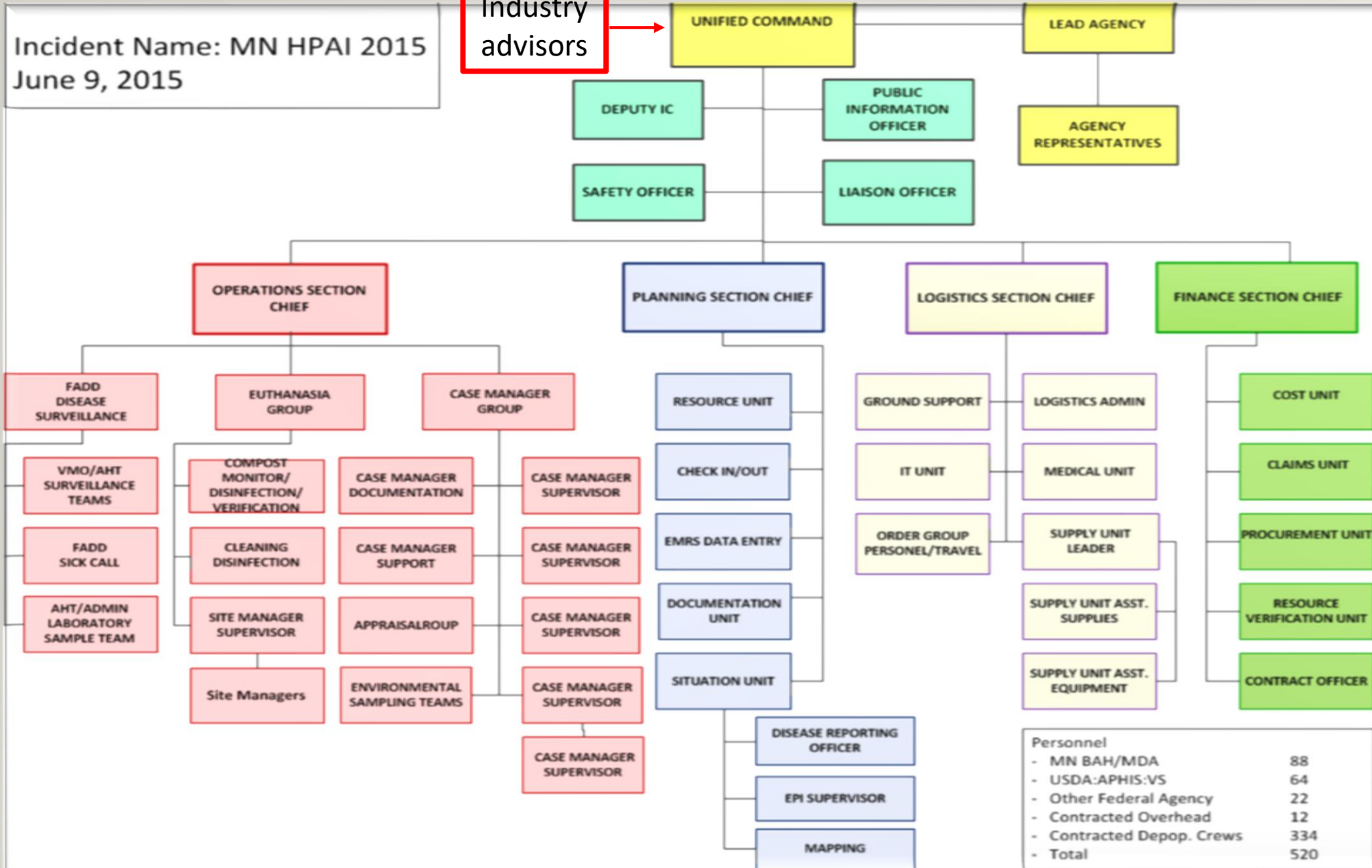
Dialog supply chain impacts

# Response: Incident Command



Incident Name: MN HPAI 2015  
June 9, 2015

Industry  
advisors



Personnel	
- MN BAH/MDA	88
- USDA:APHIS:VS	64
- Other Federal Agency	22
- Contracted Overhead	12
- Contracted Depop. Crews	334
- Total	520

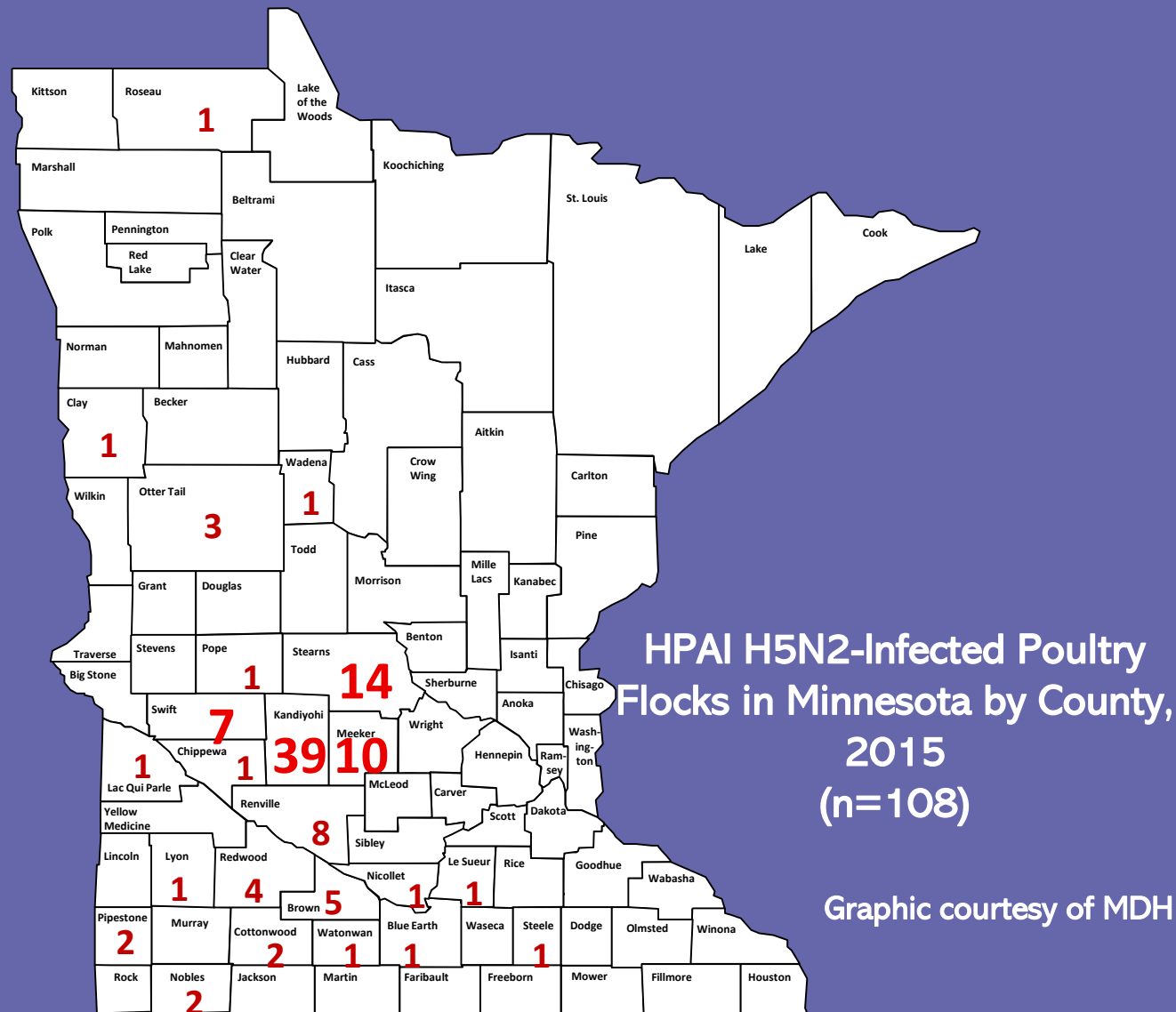


# Collaboration on communication



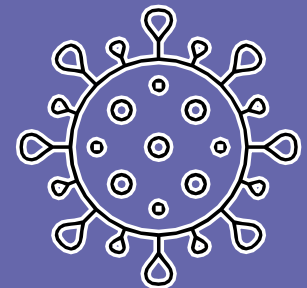
# Nonregulatory avian influenza

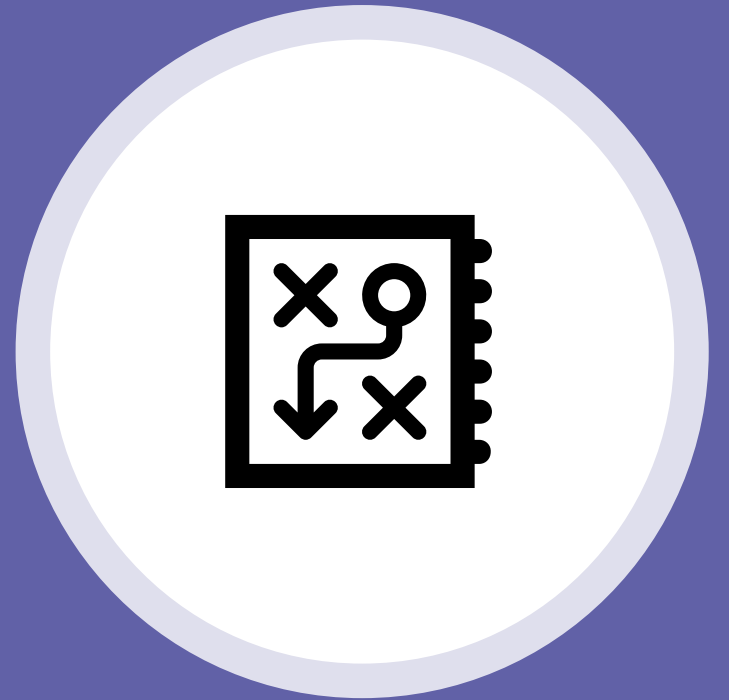
- Approaching disease control from a regional approach
  - Population management
  - Containment biosecurity
  - Transparent communication
- Active surveillance program during migratory periods



# Nonregulatory avian influenza

- Domestic poultry can become infected with a wide variety of influenza viruses
- Non H5/H7 avian influenza present different challenges for regulators and industry
- Birds can experience concomitant bacterial infection with any viral infection, including influenza





**Summary**